



Prioritizing Conservation Project Implementation in the 400-mile Mississippi Headwaters



Clean Water Funds: 2012

Accelerated Implementation Grant	\$100,000
Leveraged Funds*	\$25,000
Total Project Budget	\$125,000

* Leveraged Funds include required 25% match

Targeted Water:

Headwaters of the Mississippi River

Project Sponsor:

Mississippi Headwaters Board (MHB)

Partners:

Member Counties: Clearwater, Beltrami, Cass, Hubbard, Itasca, Aitkin, Crow Wing, Morrison

Grant Period:

January 2012 - December 2014

Project Contact:

Tim Terrill
 (218) 824-1189
 timt@mississippiheadwaters.org
 www.mississippiheadwaters.org



Project Narrative

The 400-mile stretch of the Mississippi River from its Headwaters at Lake Itasca to Morrison County near Little Falls is the focus of this project and the Mississippi Headwaters Board (MHB) is the local sponsor.

The Headwaters project will gather existing water quality data to determine river water quality over time. Electronically available land use information will be gathered and coordinated among all 8 counties along the river. Together, this information will help identify two main types of areas along the river: 1) areas of concern where water quality is showing degradation, and 2) areas that are critical to long-term water quality protection.

The MHB, working in cooperation with the member counties will develop implementation plans and strategies geared specifically for the Mississippi River and incorporate them into the individual County Comprehensive Local Water Plans. These recommendations would be specific strategies, often crossing county boundaries for implementation.

With this type of priority information in hand, the MHB and the member counties can coordinate funding strategies for targeted, effective implementation of conservation practices that take advantage of future Clean Water Land and Legacy funding opportunities as well as providing greater coordination among the counties on planning and applying existing land use authority.

Measurable Outcomes:

Water quality trend analysis along the river, critical area identification and implementation strategy identification

Coordinated dataset of Geographic Information Systems & analysis of land use along the project corridor.

Integrate implementation strategies into Comprehensive Local Water Management Plans



Prioritizing Conservation Project Implementation in the 400-mile Mississippi Headwaters

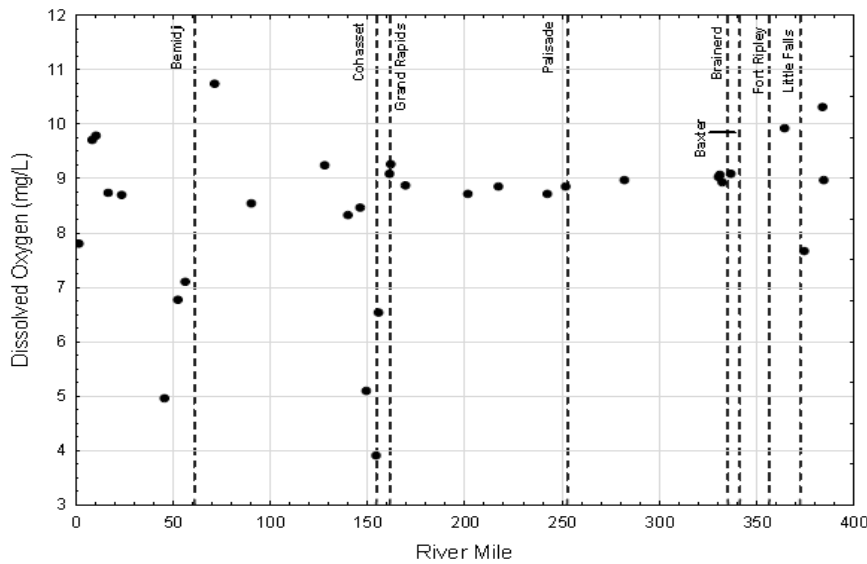
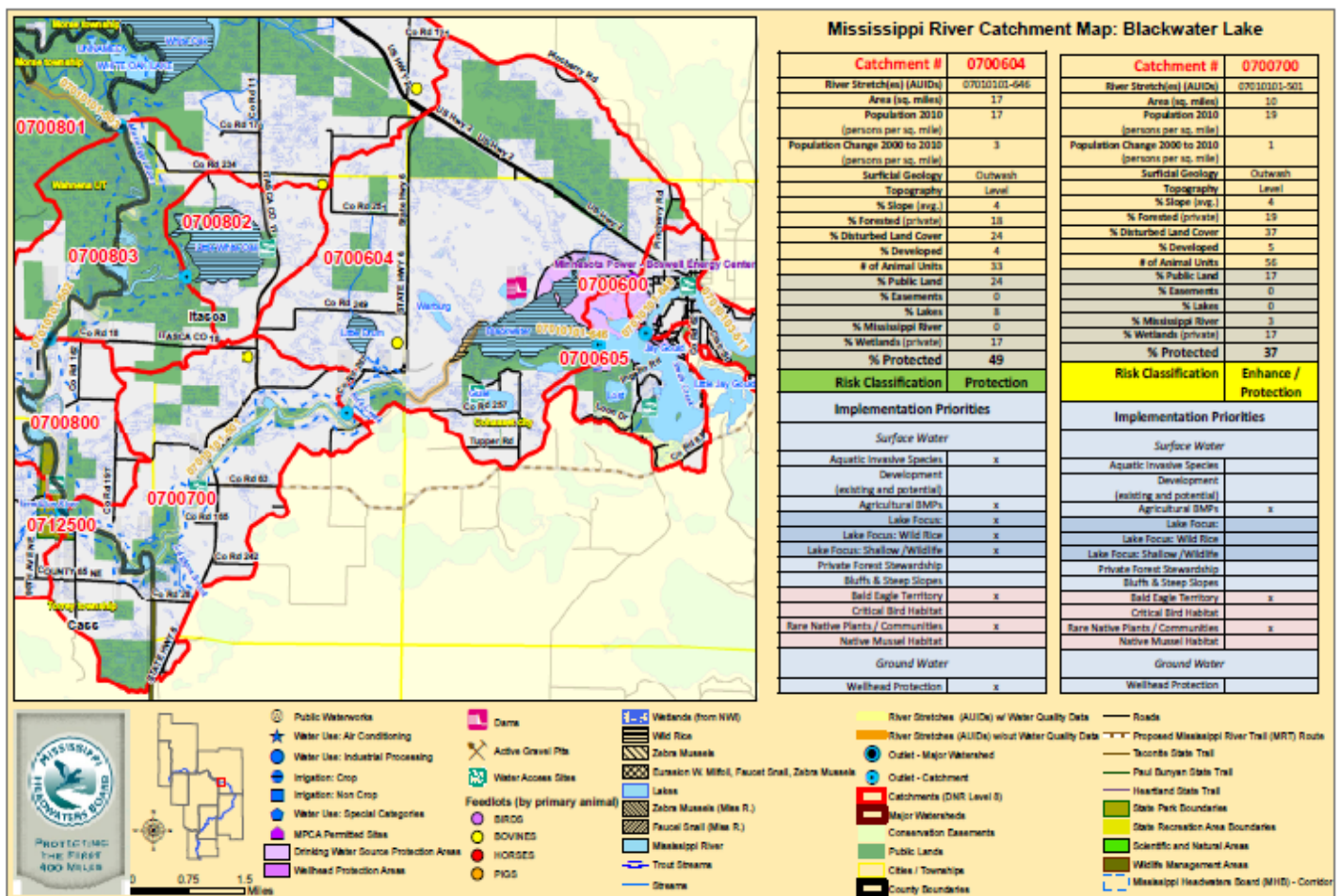


Figure 9. Mississippi River Headwaters mean dissolved oxygen concentration trends by river mile

Emmons & Oliver Resources, Inc.
water | ecology | community

Water Quality Trend Analysis For Dissolved Oxygen



Prioritization Map with Risk Classification and Implementation Priorities

For additional info. go to: <http://www.mississippiheadwaters.org/AdditionalResources.asp>